

# SnapNrack™

Solar Mounting Solutions

---



## New Products for 2018



## New Products for 2018

---

- S100 Tile Replacement
- Junction Box XL
- Universal Wire Clamp
- RL
- MLPE Frame Attachment

# S100 Tile Replacement

---

New!

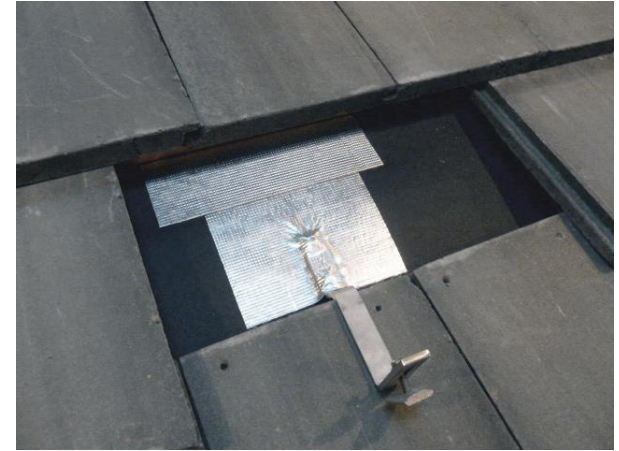
- Superior Mounting Solution for Tile Roofs



# Current Tile Solutions

---

- Tile Hooks
  - Fitment Issues
  - Grinding Tiles
- Standoffs
  - Time consuming process
  - Cutting/Drilling Tiles
- OSHA regulations - (Sept 2017)
  - Grinding/Cutting Tiles - Silica dust exposure – lung cancer, respiratory failure, kidney disease
  - Employers must implement a written control plan inclusive of medical exams, chest x-rays, and lung tests every 36 months
  - Mandate cutting equipment with integrated water delivery system



# The Cost of Broken Tiles

---

- Broken tiles contribute up to \$0.035/Watt to solar installations on tile roofs
  - Cost of replacement tiles
  - Time and labor involved with sourcing correct tiles
  - Additional labor to install replacements for broken tiles
  - Mobilization costs – going back out in the field after the job is done to replace broken tiles



# The SnapRack Tile Replacement Solution

---

- Eliminates grinding/cutting of Tiles
- Net positive tile consumption
  - Tiles that are removed can be used to replace those broken over the course of install
- Labor Savings

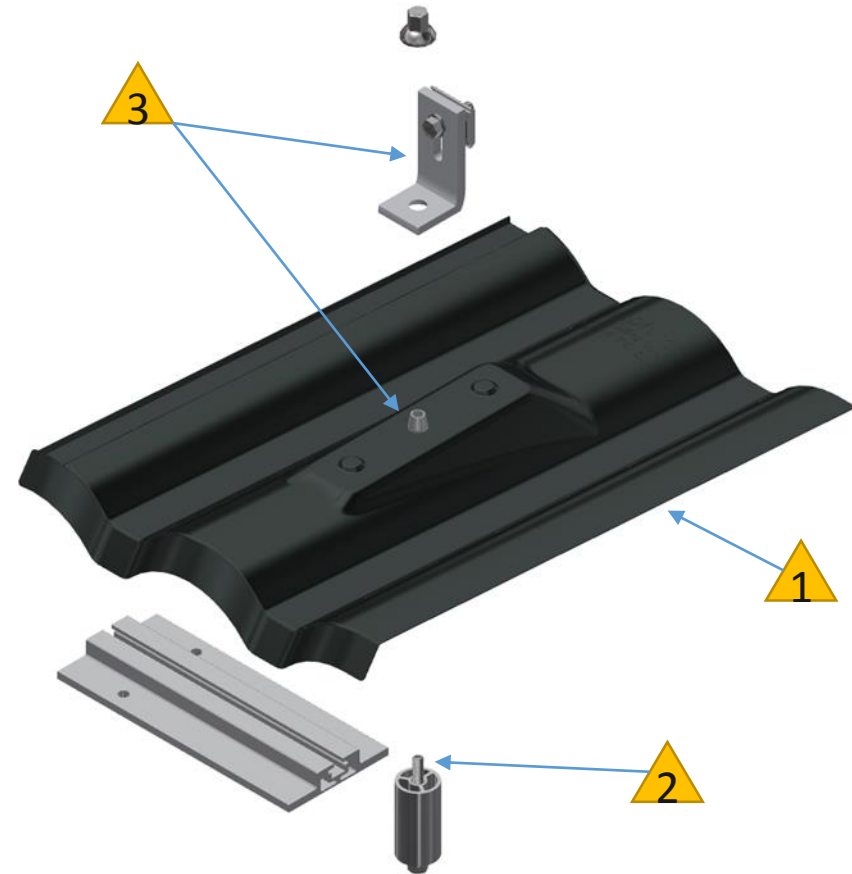




# Features and Benefits

---

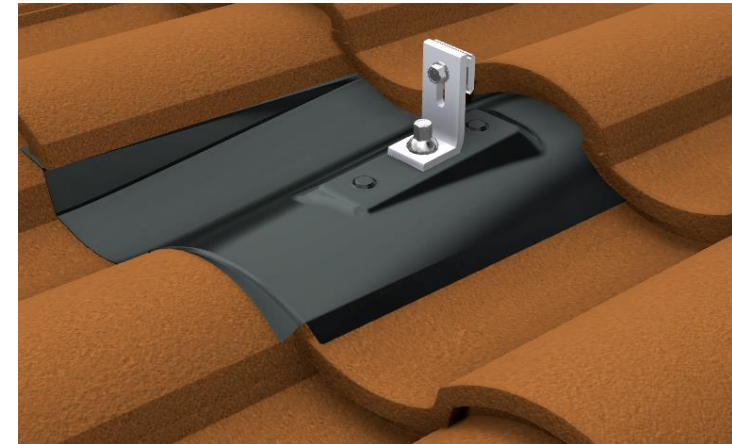
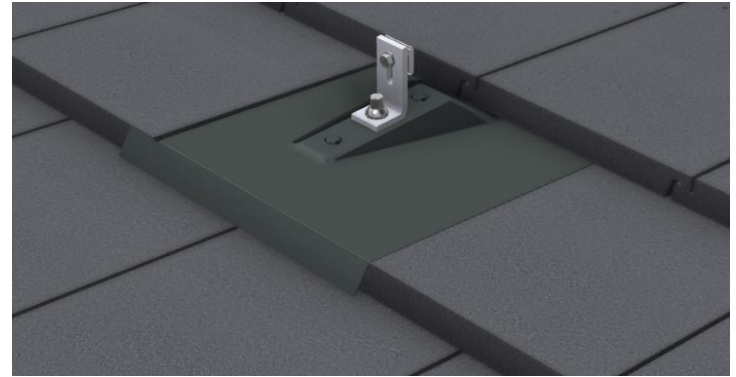
- 1 Soft aluminum flashing material is easily formed for the best fit yet withstands harsh environments
- 2 Standoff with threaded stud provides the simplest operation without any loose parts
- 3 Patent pending umbrella technology maintains a weatherproof seal
  - Priced competitively with Universal tile products on the market



# Tile Types

---

- S100 Flat Tile Replacement Kit
  - 242-01110
- S100 W Tile Replacement Kit
  - 242-01112
- S100 S Tile Replacement Kit
  - 242-01114





# Junction Box XL

---



- New Larger Junction Box
  - 75% more working room
  - Multiple arrays and accessories

Overall Dimensions [in]:  
10.7 L x 9.4 W x 3.5 H

VS.

8.9 L x 6.4 W x 3.5 H



# Junction Box Portfolio



## 242-01104 J-Box R for Rail

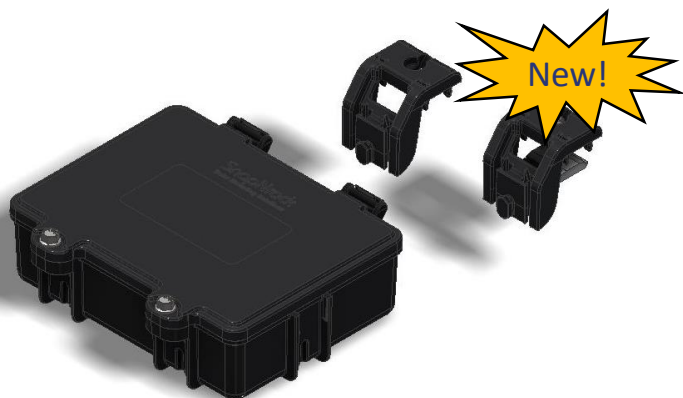
Mounting features that Snap-In to SnapNrack rail without the need for additional roof penetrations



242-01113

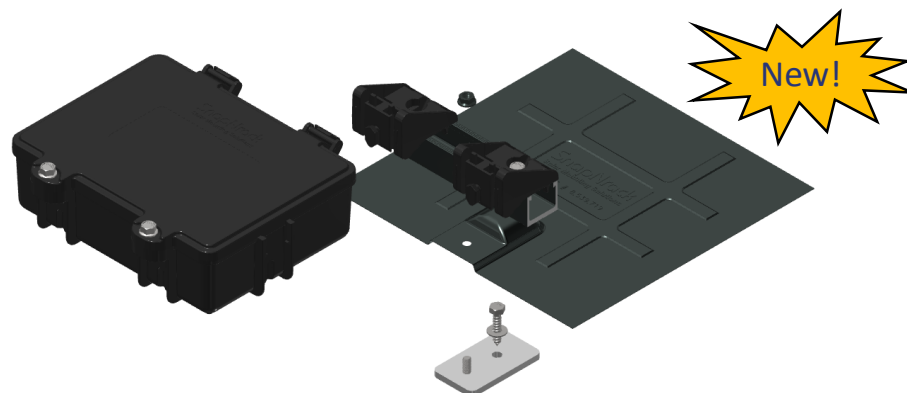
## J-Box S w/Comp Kit

Standard size box with a SnapNrack base track and Comp Shingle Flashing for use with Railless systems



## 242-92120 J-Box XL for Rail

Extra Large Junction Box with mounting features that Snap-In to SnapNrack rail without the need for additional roof penetrations



## 242-92121 J-Box XL w/Comp Kit

Provided with a SnapNrack base track and Comp Shingle Flashing for use with Railless systems

**SnapNrack™**  
Solar Mounting Solutions

# Universal Wire Clamp

---

- 242-02150 Universal Wire Clamp R
  - Leverages existing features of the clamps for rail
  - Combines existing trunk cable and 4-wire clamps into a single clamp
  - Compatible with any combination of PV wires, Engage cables and Q cables



TRUNK CABLE CLAMP &  
4-WIRE CLAMP FOR RAIL  
242-02103  
242-02102



# SnapNrack™

Solar Mounting Solutions

## Mounting System



# SnapRack RL Component Overview - Simple as ABC

---



**A Mounts**



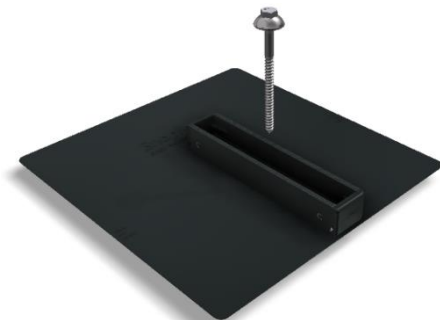
**B Mounts**

**Complete System Solution**  
**Industry Leading 20 Year Warranty**

**C Link Clamp**

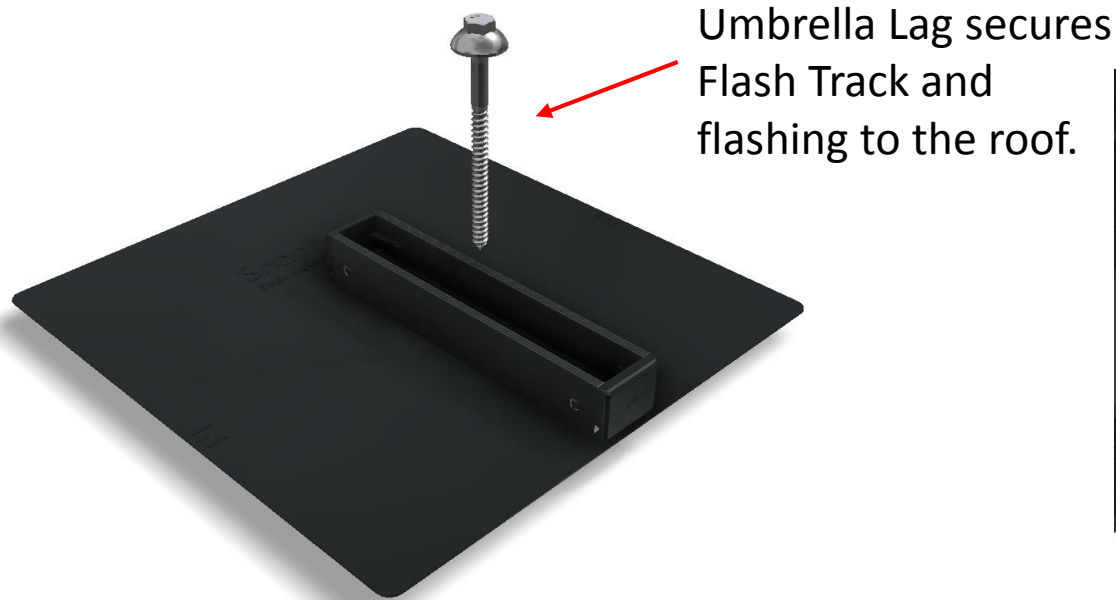


**Umbrella Bolt Sealing**



# SnapRack RL Components – Flash Track

---



- Single lag screw secures flashing, base, and mount assembly to the roof.
- Patent Pending Umbrella Bolt technology provides 20 year weatherproofing
  - Flashing protrudes into cavity underneath lag



# SnapNrack RL Components – A and B Mounts

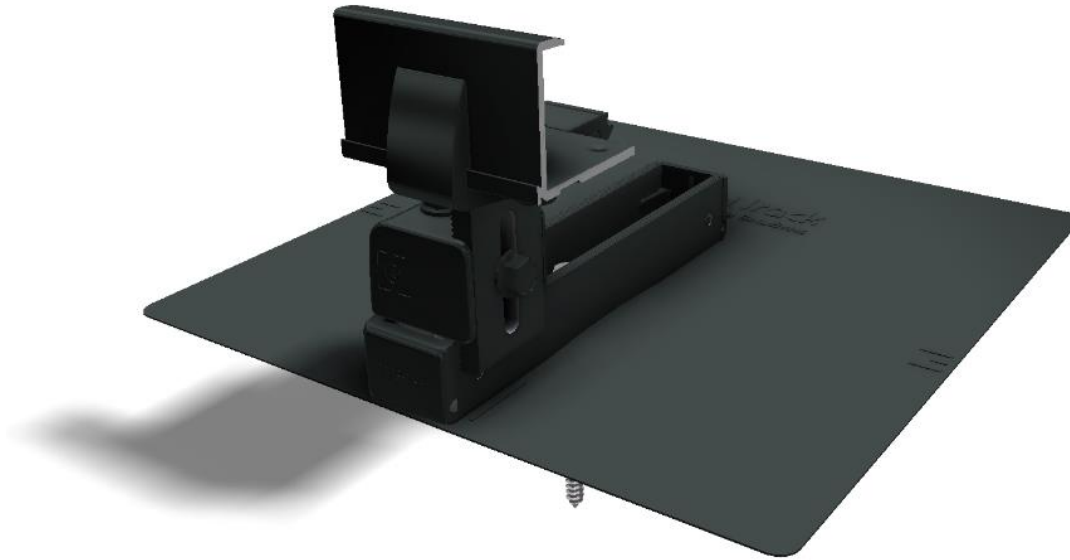
---



- Flash Track allows for a full 6 inches of North-South adjustability

# SnapRack RL Components – A Mounts

---

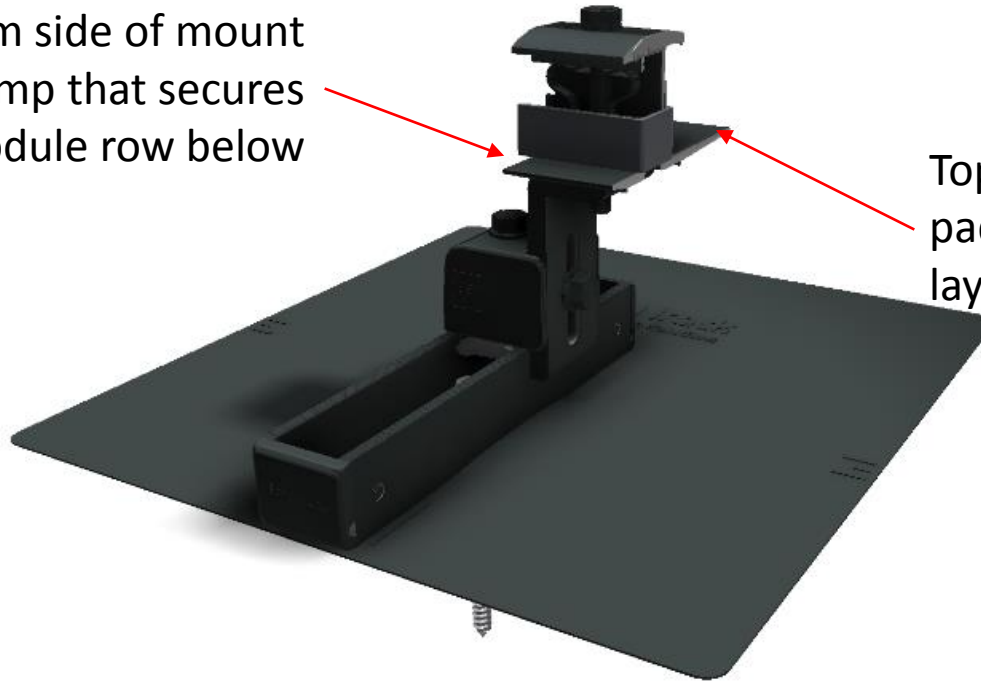


- Top of the line aesthetics without the need for a skirt
- A Mounts provide a secure sleeve-in module attachment
  - No need to reach over the module
  - No bottom-side fastening of modules required
- 1.5” of vertical adjustability with string line feature for easy levelling
- A mounts are module frame height specific (32mm, 35mm, 38mm, 40mm)

# SnapRack RL Components – B Mounts

---

Bottom side of mount provides clamp that secures the module row below



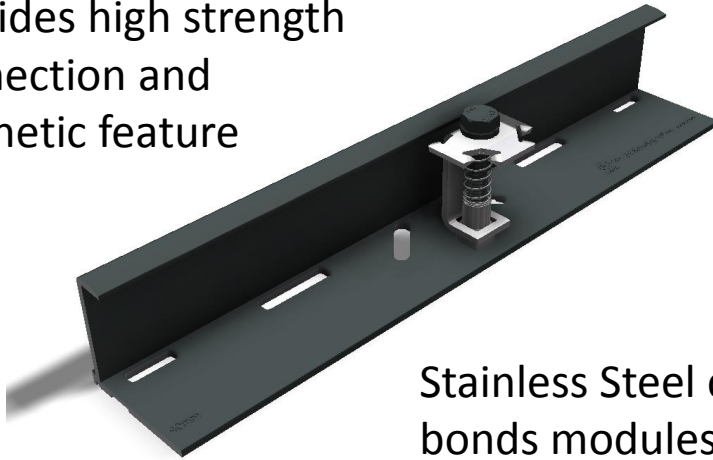
Top of mount provides landing pad and drop in sleeve for laying modules down above

- B Mount provides clamping to secure top edge of module prior to installing next row up the roof
- B Mounts are module frame height specific (32mm, 35mm, 38mm, 40mm)
- Landing pad on top provides space to sleeve next row of modules with no need for additional clamping
- All mechanical fastening is done along the top of the row

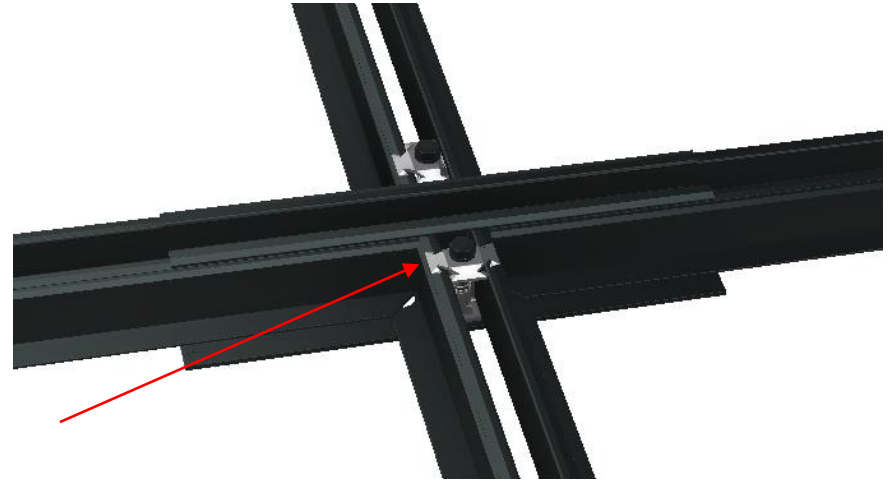
# SnapNrack RL Components – C Links

---

Aluminum sleeve  
provides high strength  
connection and  
aesthetic feature



Stainless Steel clamp  
bonds modules and  
creates rigid structure

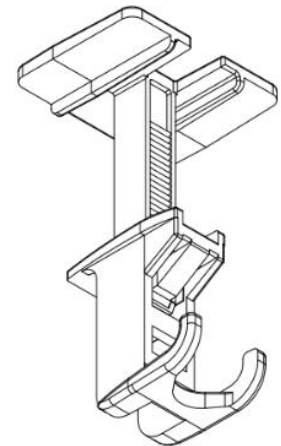


- C Links provide bonding and structural connection between two modules in a row
- C Links are module frame height specific (32mm, 25mm, 38mm, 40mm)
- C Links can be installed independently or in conjunction with A Mounts and/or B Mounts

# Wire Management

---

- New Smartclip provides wire management at any point along the module
  - 232-01170 Smart Clip I
  - 232-01173 Smart Clip II
- Easily tucks wires away within the module envelope to avoid any unintended removal over time
- Wire Saver provides the ability to secure loose wires post module install
  - 242-92262 Wire Saver
- Perfect for last minute wire management



## Optional Ridge Mount

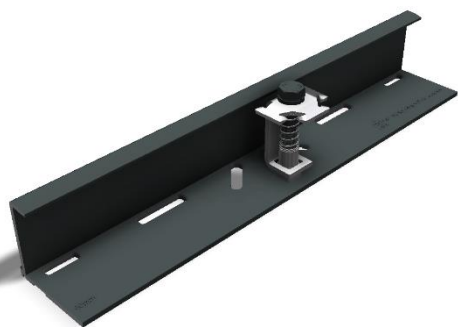
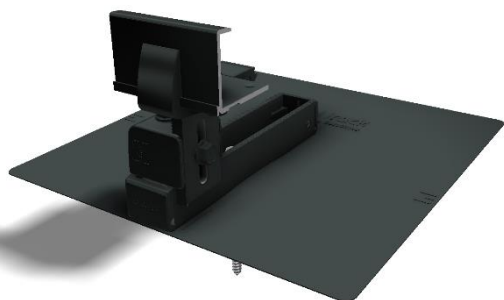
---

- Extended B mount for use where jurisdictions do not require setbacks from the peak of the roof





# SnapRack RL Component Overview - Simple as ABC

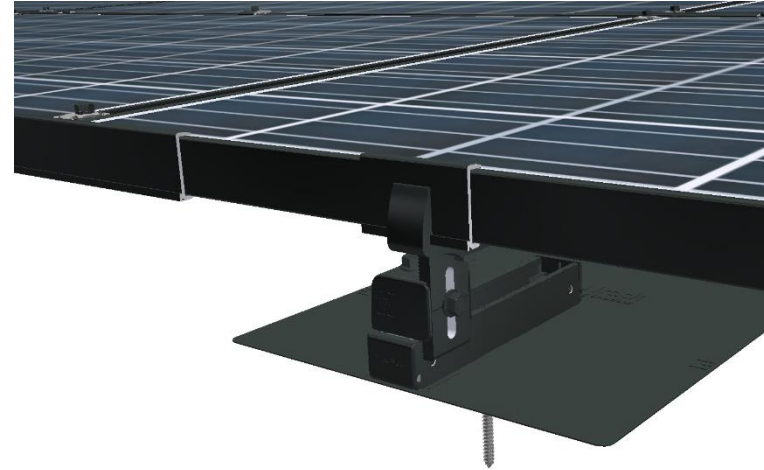


RL Railless System	
RL Comp Flash Track Kit	242-92250
RL A Mount, 32mm	242-92332
RL A Mount, 35mm	242-92335
RL A Mount, 38mm	242-92338
RL A Mount, 40mm	242-92340
RL B Mount, 32mm	242-92432
RL B Mount, 35mm	242-92435
RL B Mount, 38mm	242-92438
RL B Mount, 40mm	242-92440
RL C Link, 32mm	242-92532
RL C Link, 35mm	242-92535
RL C Link, 38mm	242-92538
RL C Link, 40mm	242-92540
RL Ridge Mount, 32mm	242-92632
RL Ridge Mount, 35mm	242-92635
RL Ridge Mount, 38mm	242-92638
RL Ridge Mount, 40mm	242-92640
RL Mount Sleeve, 32mm	232-01532
RL Mount Sleeve, 35mm	232-01535
RL Mount Sleeve, 38mm	232-01538
RL Mount Sleeve, 40mm	232-01540
RL Flash Track Spacer	242-92254

# RL Features and Benefits

---

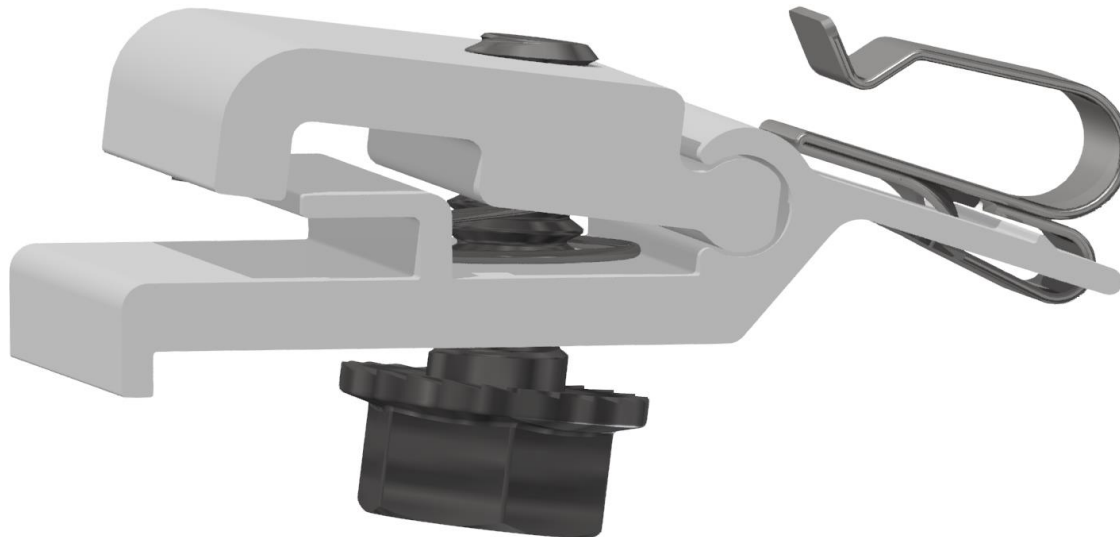
- Elimination of rail provides cost-saving benefit for entire system
- Smaller individual components means easier logistics to get parts on the roof
- Unique A Mount design provides a sleek finish to front of array without needing a skirt (though it is optional)
- Pre-assembled mounts and single tool installation make job fast and easy
- System design requires only securing module on top side meaning less steps during install



# MLPE Frame Attachment

---

- 242-02151 MLPE Frame Attachment Kit
  - Secures to inside of module frame with alignment features to prevent rotation and ensure proper attachment
  - Single bolt clamps onto MLPE device and module frame using standard  $\frac{1}{2}$ " socket
  - Includes Smart Clip for managing wires from MLPE device securely



# Availability

---

- Universal Wire Clamp
  - Order Now, material stocked in most locations, available with standard lead time
- RL, Tile Replacements, and J-Box-XL
  - Product is available for order now
  - Lead time dependent on order volume
  - Standard package quantities
    - RL – A Mount, B Mount, C Link, Wire Saver, MLPE attachment – 20 pcs
    - RL – Ridge Mount – 10 pcs
    - RL Smart Clips – 100 pcs
    - Tile Replacements – 10 pcs
    - J-Box – 1 pc



# Questions?

## Appendix Deck Level Flashing for S100

---

