

NOTES:

PART MOLDED IN 70 DUROMETER EPDM RUBBER, BLACK IN COLOR

PART MUST HAVE EXCELLENT UV RESISTANCE

ALL DIMENSIONS ARE IN INCHES UNLESS STATED OTHERWISE

PART TO BE MANUFACTURED TO SPI STANDARD TOLERANCES EXCEPT WHERE NOTED

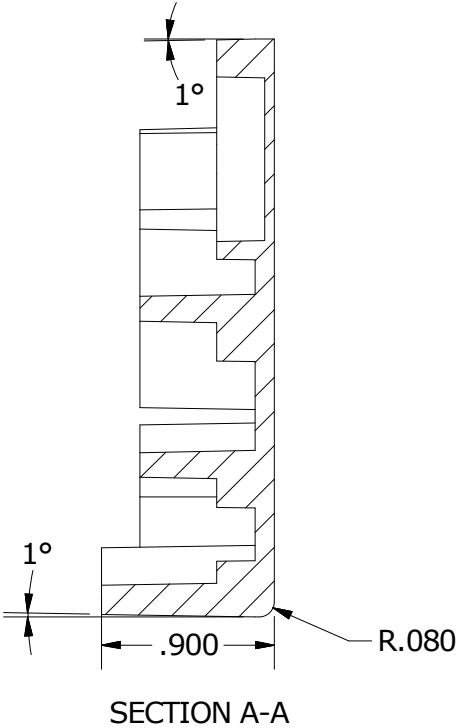
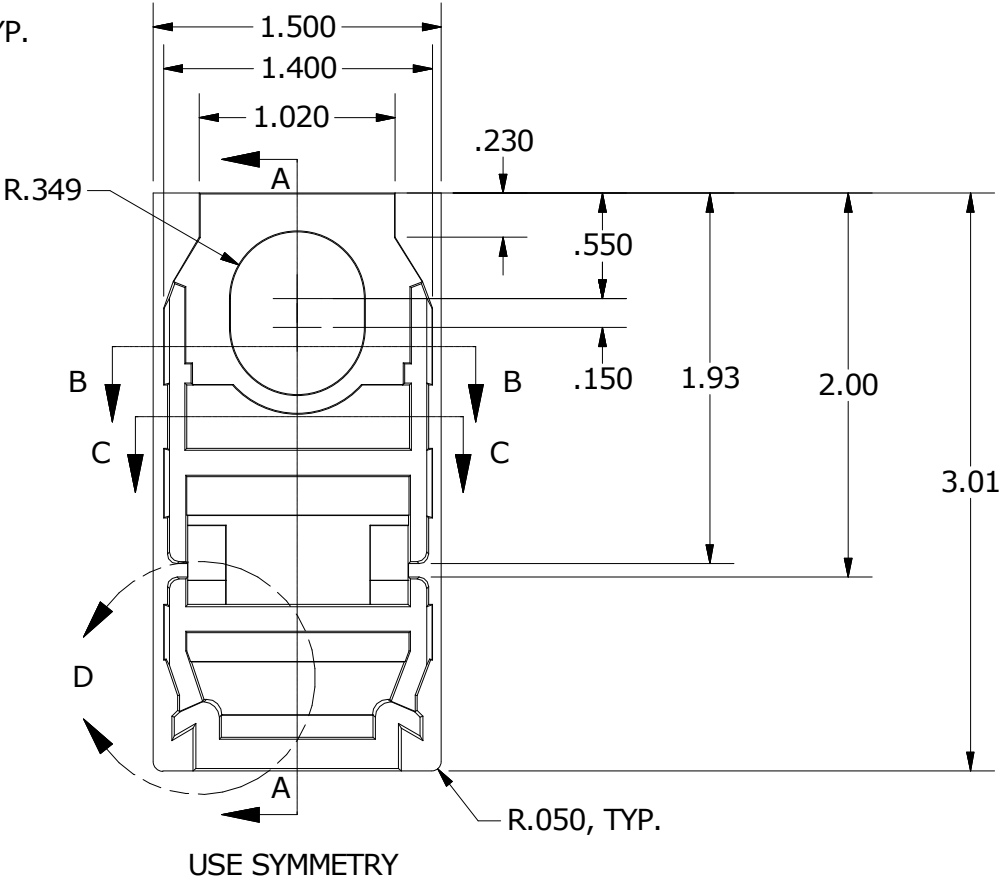
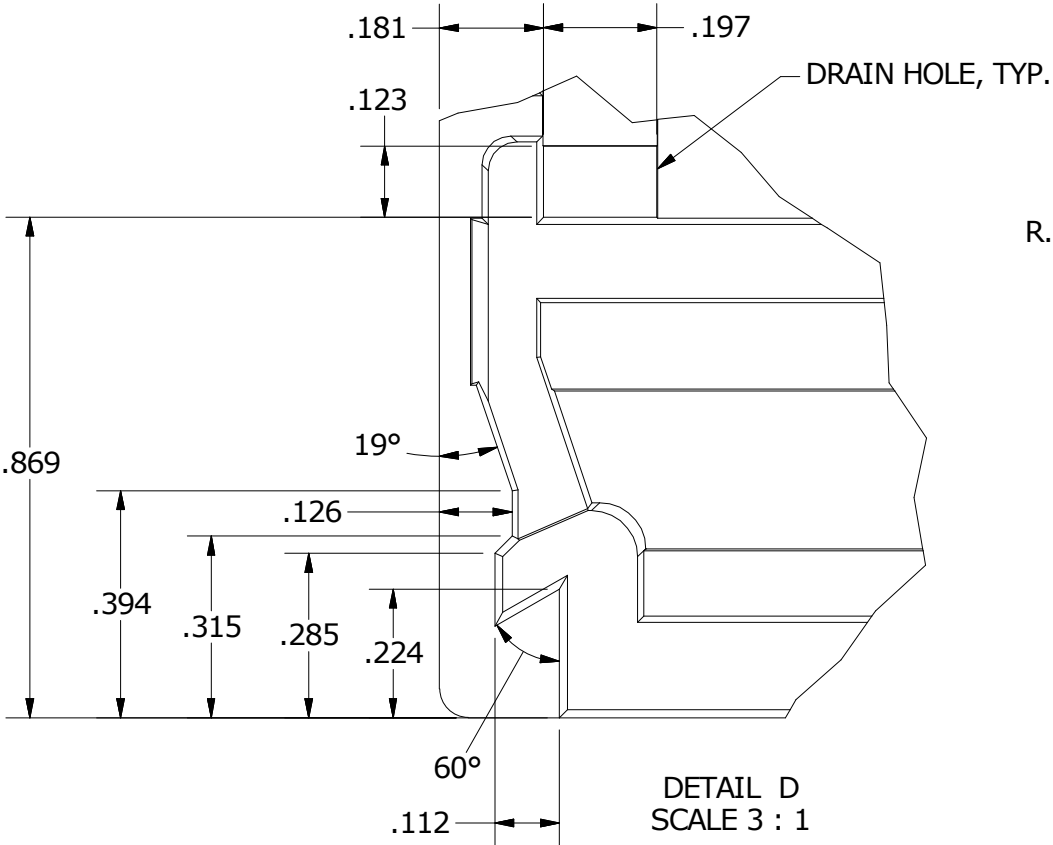
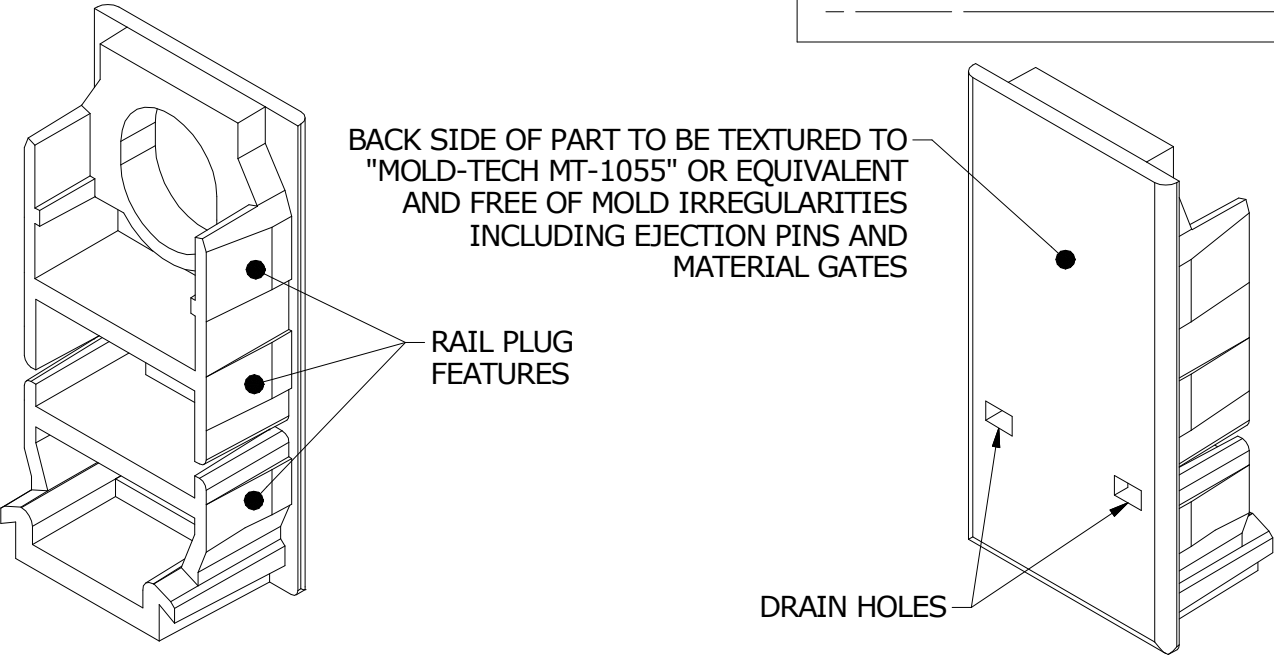
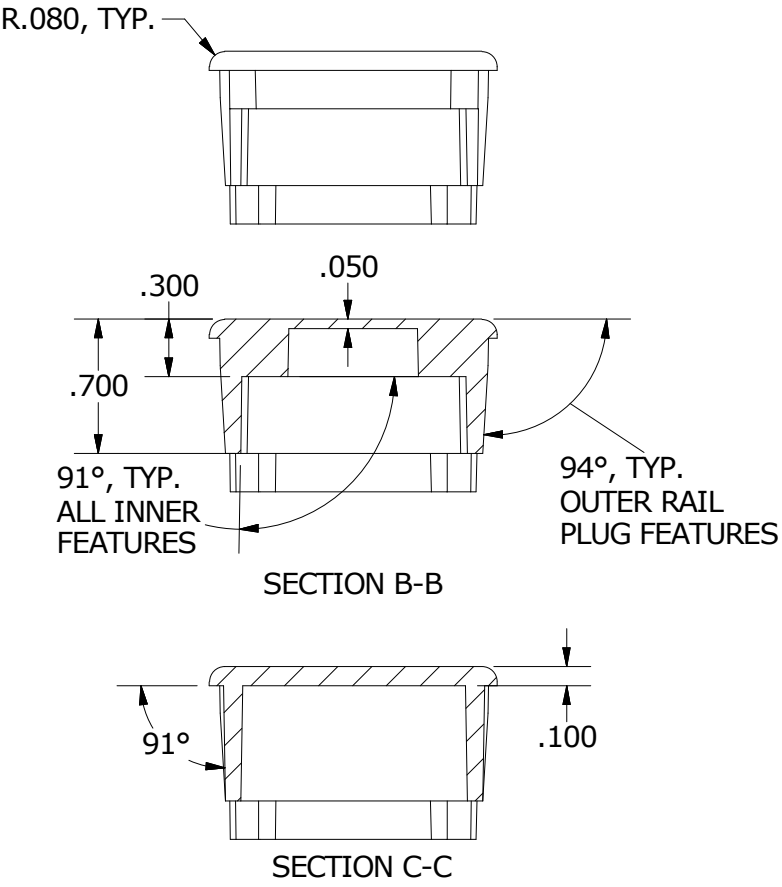
REFER TO 3D CAD MODEL FOR DIMENSIONS NOT SHOWN ON DRAWING

MODEL ASSUMES 1 DEGREE DRAFT ANGLE

CONFIRM THAT FINAL PART FITS TIGHTLY INTO THE END OF A SECTION OF GROUND RAIL (SNAPNRACK 232-01072, 232-01110, OR 232-01111)

PART WEIGHT: 0.07 LBS

REVISION:			
G	9/17/2010	ICR1001475	
H	8/17/2016	NU000426	



Sunrun South LLC
595 MARKET STREET, 29TH FLOOR • SAN FRANCISCO, CA 94105 USA
PHONE (415) 580-6900 • FAX (415) 580-6902
THE INFORMATION IN THIS DRAWING IS CONFIDENTIAL AND PROPRIETARY. ANY REPRODUCTION, DISCLOSURE, OR USE THEREOF IS PROHIBITED WITHOUT THE WRITTEN CONSENT OF SUNRUN SOUTH LLC.

DESIGNER: G.McPheeters
DRAFTER: D.Ryan
APPROVED BY: G.McPheeters

SCALE: 1:1
DATE: 8/17/2016

PART NUMBER:
232-01043

DESCRIPTION:
SNAPNRACK, GROUND RAIL END CAP

REV
H