

1Ø3W—120/240 Vac—UL Listed Main Lugs



QO120L125G



QO816L100F or S
without cover

Product Selector

Table 1.17: Main Lugs (Accepts Only QO Plug-On Circuit Breakers)

	Mains Rating	Spaces	Max. 1P Circuits [1]	Max. Tandem Circuit Breakers	Load Center Box and Interior	Indoor Cover with Door (Order Separately)		Main Wire Size AWG/kcmil		Equipment Ground Bar Kit (Order Separately)	Box No. [2]			
						Flush	Surface	Al	Cu					
INDOOR	Fixed Mains—Factory-Installed Main Lugs—10 kA Short Circuit Current Rating [3]													
	30 A	2	2	0	QO2L30S [4] [5]	Cover Included—Without Door		12–10	14–10	PK3GTA1	1			
	70 A	2	4	2	QO24L70F/S [6] [7]	Cover Included—Without Door		12–3	14–4	PK4GTA	2			
	100 A	6	12	6	QO612L100F/S [6] [8]	Cover Included—Without Door		8–1		PK7GTA	4			
		6	12	6	QO612L100DF/S [6] [8]	Cover Included—With Door				PK7GTA	4			
		8	16	8	QO816L100F/S [6] [8]	Cover Included—Without Door				PK7GTA	4			
		8	16	8	QO816L100DF/S [6] [8]	Cover Included—With Door				PK7GTA	4			
		6	12	6	QO612L100DFCU/SCU [6] [8] [9]	Cover Included—With Door				PK7GTA	4			
		8	16	8	QO816L100DFCU/SCU [6] [8] [9]	Cover Included—With Door				PK7GTA	4			
	125 A	4	8	4	QO148L125GF/S [6] [10]	Cover Included—Without Door		12–2/0	14–2/0	PK7GTA [11]	21			
	Convertible Mains—Factory-Installed Main Lugs—65 kA Short Circuit Current Rating QOM1 Main Frame Size—Convertible to Main Circuit Breaker—Cu Bus [3] [12]													
	125 A	12	12	0	QO112L125G	QOC16UF	QOC16US	6–2/0		PK9GTA [11]	6			
		12	24	12	QO11224L125G	QOC16UF	QOC16US			PK15GTA [11]	6			
		16	16	0	QO116L125G	QOC24UF	QOC24US			PK12GTA [11]	7			
		16	24	8	QO11624L125G	QOC24UF	QOC24US			PK15GTA [11]	7			
		20	20	0	QO120L125G	QOC20U100F	QOC20U100S	6–2/0	6–1	PK15GTA [11]	6			
		20	24	4	QO12024L125G	QOC20U100F	QOC20U100S	6–2/0	6–1	PK15GTA [11]	6			
		24	24	0	QO124L125G	QOC24UF	QOC24US	6–2/0		PK15GTA [11]	7			
		32	32	0	QO132L125G	QOC32UF	Use Flush			PK23GTA, LK100AN [11]	8			
	Convertible Mains—Factory-Installed Main Lugs—65 kA Short Circuit Current Rating—Convertible To Main Circuit Breaker—Cu Bus [3] [12]													
	150 A	20	30	10	QO12030L150G	QOC30UF	QOC30US	6–250		PK23GTA, LK100AN [11]	9			
		24	24	0	QO124L150G	QOC30UF	QOC30US			PK15GTA [11]	9			
		30	30	0	QO130L150G	QOC30UF	QOC30US			PK23GTA, LK100AN [11]	9			
	200 A	12	12	0	QO112L200G	QOC30UF	QOC30US	6–250		PK15GTA [11]	9			
		24	36	12	QO12436L200TFT [13]	QOC40UF	QOC40US			PK23GTA, LK100AN [11]	10			
		30	30	0	QO130L200G	QOC30UF	QOC30US			PK23GTA, LK100AN [11]	9			
		30	40	10	QO13040L200G	QOC30UF	QOC30US			PK23GTA, LK100AN [11]	9			
		40	40	0	QO140L200G	QOC40UF	QOC40US			PK23GTA, LK100AN [11]	10			
		40	60	20	QO14060L200G	QOC40UF	QOC40US			(2) PK15GTA [11]	10			
		42	52	10	QO14252L200G	QOC42UF	QOC42US			(2) PK15GTA [11]	11			
		225 A	42	42	0	QO142L225G	QOC42UF			QOC42US	6–300	PK23GTA, LK100AN [11]	11	
	Fixed Mains—Factory-Installed Main Lugs—65 kA Short Circuit Current Rating [3] [12]													
	400 A	30	30	0	QONQ30LS400 (Int) [14]	NC50NQVF	NC50NQVS	(1) 1/0–750 or (2) 1/0–300		PK27GTA [15] or PK15GTA6	15			
					MH50 (box) [16]									
		42	42	0	QONQ42LS400 (Int) [14]	NC50NQVF	NC50NQVS				15			
					MH50 (box) [16]									
Above listings through 200 A mains rating meet Federal Specification W-P-115C as Type 1, Class 2.														

Above listings through 200 A mains rating meet Federal Specification W-P-115C as Type 1, Class 2.

- [1] Maximum single pole branch circuits utilizing QO and/or QOT circuit breakers.
 [2] See Table 1.53 Knockout Information, page 1-21
 [3] UL short circuit current rating depends on lowest interrupting rating of circuit breaker installed.
 [4] Will not accept QO-EPD or Qwik-Gard™ QO-GFI or QO-AFI circuit breakers.
 [5] Mains rated 25 A when Al wire is used.
 [6] Order F for flush device or S for surface device.
 [7] Use 10 AWG maximum size wire for GFI and AFI circuit breakers.
 [8] 70 A Max. branch circuit breaker and 100 A max. back fed main circuit breaker.
 [9] CU indicates copper bus.
 [10] Copper bus.
 [11] Factory-included.
 [12] UL Listed 5000 A short circuit current rating for corner grounded Delta systems. Use QO-H circuit breakers only.
 [13] Supplied with feed-thru lugs.
 [14] Interior only, order box separately.
 [15] PK27GTA includes a 6–2/0 AWG Al/Cu lug.
 [16] PE1A Discount Schedule.

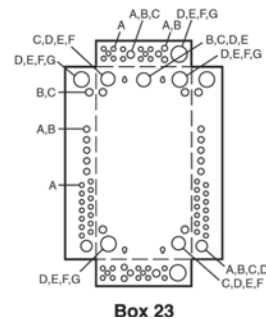
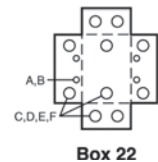
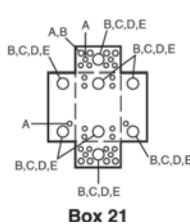
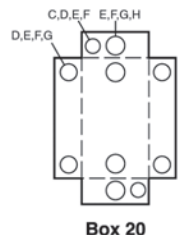
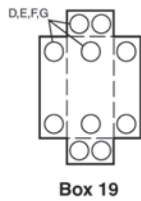
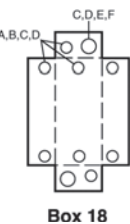
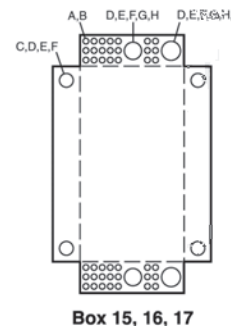
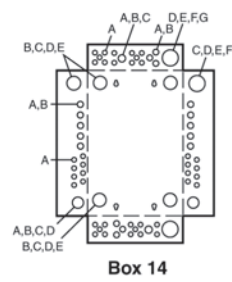
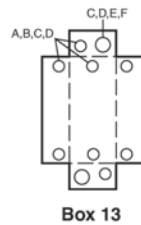
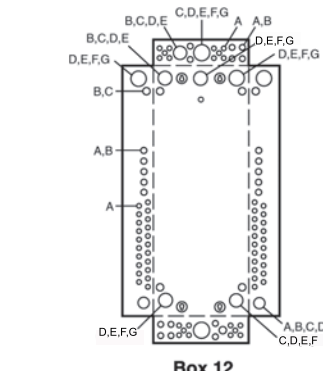
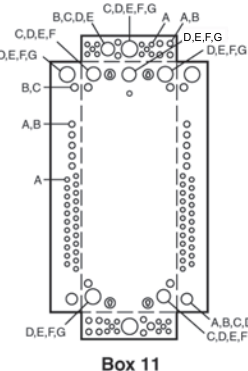
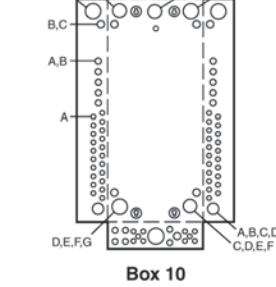
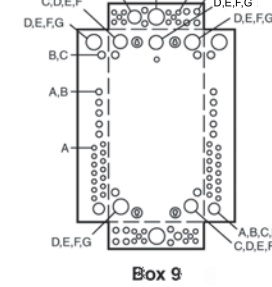
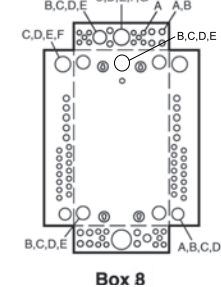
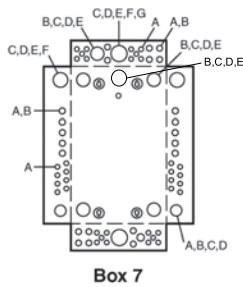
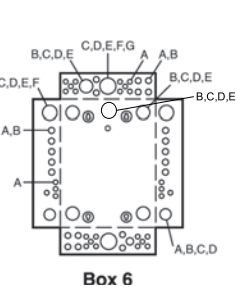
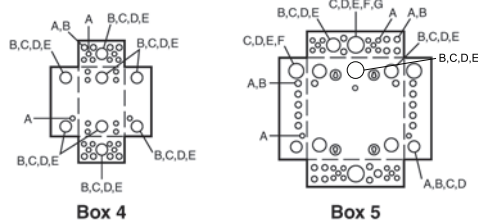
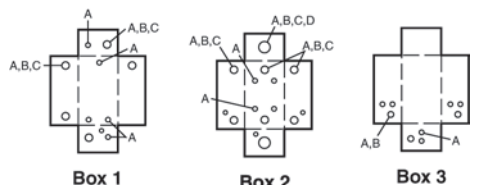
Indoor Knockout Information and Enclosure Dimensions

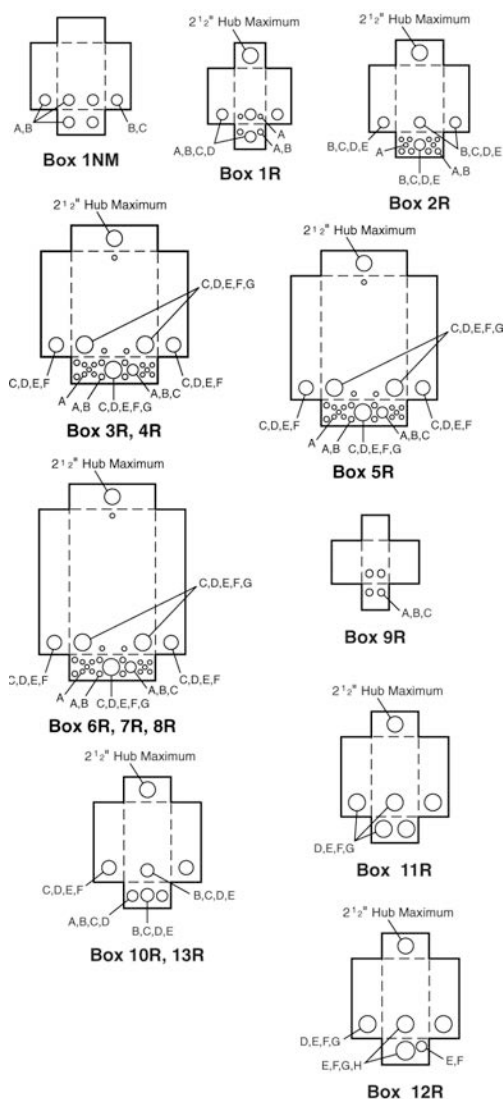
Table 1.52: Enclosure Dimensions

Box No.	Dimensions						Box No.	Dimensions					
	W	mm	H	mm	D	mm		W	mm	H	mm	D	mm
1	3.81	97	6.72	171	3.00	76	13	5.88	149	13.12	333	3.38	86
2	4.81	122	9.30	236	3.19	81	14	14.25	362	20.92	531	3.75	95
3	4.81	122	9.30	236	3.19	81	15	20.00	508	50.00	1270	5.75	146
4	8.88	226	12.57	319	3.80	97	16	20.00	508	62.00	1727	5.75	146
5	14.25	362	14.92	379	3.75	95	17	20.00	508	53.00	1346	5.75	146
6	14.25	362	17.92	455	3.75	95	18	5.88	149	16.12	409	3.38	86
7	14.25	362	20.92	531	3.75	95	19	7.56	192	23.12	587	4.25	108
8	14.25	362	26.04	661	3.75	95	20	9.62	244	26.12	663	4.75	121
9	14.25	362	29.86	758	3.75	95	21	8.88	226	14.80	376	3.80	97
10	14.25	362	33.78	858	3.75	95	22	8.55	217	23.92	608	3.95	100
11	14.25	362	37.98	965	3.75	95	23	14.25	362	29.86	758	3.75	95
12	14.25	362	39.37	1000	3.75	95	24	14.25	362	43.15	1096	3.75	95
							25	14.25	362	48.50	1235	3.75	95

Table 1.53: Knockout Information

Symbol	Knockouts								
	A	B	C	D	E	F	G	H	I
Conduit Size	1/2	3/4	1	1-1/4	1-1/2	2	2-1/2	3	3-1/2





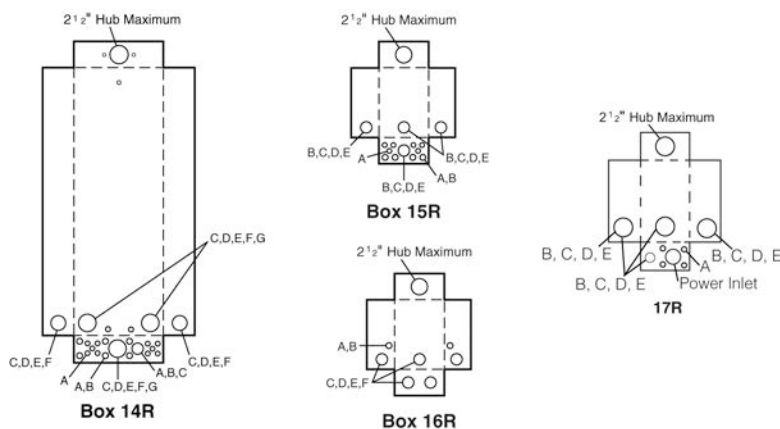
Enclosure Dimensions and Knockout Information

Table 1.54: Enclosure Dimensions

Box No.	Dimensions					
	W		H		D	
	in.	mm	in.	mm	in.	mm
1NM	6.52	166	8.79	223	3.90	99
1R [1]	4.88	124	9.38	238	4.00	102
2R	8.88	226	12.65	321	4.27	108
3R	14.75	375	18.92	481	4.52	115
4R	14.75	375	22.06	560	4.52	115
5R	14.75	375	26.04	661	4.52	115
6R	14.75	375	29.86	758	4.52	115
7R	14.75	375	33.78	858	4.52	115
8R	14.75	375	37.98	965	4.52	115
9R	4.56	116	6.50	165	3.88	99
10R	6.92	176	13.18	335	4.12	105
11R	7.56	192	23.24	590	4.75	121
12R	9.62	244	26.24	666	5.50	140
13R	6.92	176	16.18	411	4.12	105
14R	14.75	375	39.37	1000	4.52	115
15R	8.88	226	14.80	376	4.27	108
16R	8.55	217	24.75	629	4.16	106
17R	8.88	226	12.65	321	4.27	108

Table 1.55: Knockout Information

Symbol	Knockouts							
	A	B	C	D	E	F	G	H
Conduit Size	1/2 in.	3/4 in.	1 in.	1-1/4 in.	1-1/2 in.	2 in.	2-1/2 in.	3 in.



Bolt-On Hubs

Square D equipment with "R" or "RB" suffix, designated NEMA 3R rainproof construction, utilizes bolt-on hubs listed below. "RB" devices will accept 3/4 in. through 2-1/2 in. bolt-on hubs without the use of reducers. Off-center conduit thread openings and elongated mounting holes provide quick and easy adjustment to eliminate costly conduit offsets and bends. Catalog suffix "R" devices require 3 in. through 4 in. field cut opening. Hubs are suitable for use with conduit having ANSI standard taper pipe thread.

Table 1.56: Bolt-On Hubs UL Listed for "RB" Devices

Conduit Size	3/4 in.	1 in.	1-1/4 in.	1-1/2 in.	2 in.	2-1/2 in.
Hub Cat. No.	B075	B100	B125	B150	B200	B250

NOTE: Closing cap (Cat. No. BCAP) is provided factory-installed on each device having "RB" suffix.

Table 1.57: Bolt-On Hubs UL Listed for Mounting in Field-Cut Opening

Conduit Size	3 in.	3-1/2 in.	4 in.	
Hub Cat. No.	B300	B350	B400	Designed for mounting in field cut opening. Includes gasket and four mounting bolts and nuts.



[1] HOME250SPA and QO260NATR top endwall has no hub opening.