

# SOLARMOUNT® - DOMESTIC SOLUTION








## UNLOCK MAXIMUM SAVINGS WITH SOLARMOUNT®



Unirac's US-made SolarMount® racking system is designed to meet safe harbor guidance. This domestic rail system retains all the key features that customers value in SolarMount® and can qualify for the 10% Domestic Content Bonus Credit (DCBC)!

Under the IRS's First Updated Safe Harbor Guidance (Notice 2025-08), SolarMount® racking systems may contribute up to 19.6% of the total 40% domestic content requirement for a complete PV installation for MLPE-based systems. When paired with select domestic content inverters on the market, the SolarMount® racking system plays a pivotal role in meeting the 40% domestic content threshold.

 <b>RAIL</b>  <b>RAIL</b> <b>15.0% - 18.7%</b> MLPE SYSTEMS    STRING SYSTEMS	+	 <b>STRUCTURAL FASTENERS</b>  <b>MLPE MOUNT    CLAMPS**    SPLICE</b> <b>3.5% - 4.4%</b> MLPE SYSTEMS    STRING SYSTEMS	+	 <b>DOMESTIC PRODUCTION</b> Applies if rail and structural fastener are US manufactured <b>1.1% - 1.4%</b> MLPE SYSTEMS    STRING SYSTEMS	=	<b>DOMESTIC RACKING SYSTEM</b> ★★★★★ <b>19.6% - 24.5%</b> MLPE SYSTEMS    STRING SYSTEMS <b>OF 40% DCBC THRESHOLD</b>
--	---	--	---	--	---	---

*\*The content provided in this bulletin is for informational purposes only; it is not tax advice. Unirac cannot provide, and is not providing, tax advice regarding eligibility for tax credits, including the DCBC adder, as eligibility depends on several factors including a tax payer's risk profile. Unirac is not a tax professional. The information provided here is Unirac's good faith interpretation of these terms as of the publishing date of this bulletin, and that interpretation shall not be relied on for claiming the DCBC. Unirac's interpretation and use of "rails" and "structural fasteners" in this bulletin is informative, non-limiting guidance only and is not intended to impede a tax payer's interpretation of such terms. Unirac makes no representation or warranty that any customer or taxpayer will be able to claim a tax credit—including the DCBC—if it purchases Unirac domestic components. Not all parties can claim the domestic content bonus. Customers must consult their own tax advisors to determine eligibility.*

*\*\*Subject to inclusion on a TPO domestic content AVL and/or customer's independent validation through its tax advisors. Unirac makes no representation or warranty regarding eligibility\*.*

# SOLARMOUNT® - UNIRAC'S DOMESTIC SOLUTION



## ★★★★★ DOMESTIC RAIL - RAIL



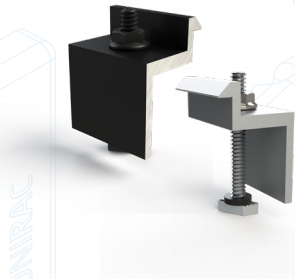
### SOLARMOUNT® - LIGHT RAIL

PART NUMBER	DESCRIPTION
315168D-US	SM LIGHT RAIL 168" DRK
315185D-US	SM LIGHT RAIL 185" DRK
315246D-US	SM LIGHT RAIL 246" DRK
315168M-US	SM LIGHT RAIL 168" MILL
315185M-US	SM LIGHT RAIL 185" MILL
315246M-US	SM LIGHT RAIL 246" MILL

### SOLARMOUNT® - STANDARD RAIL

PART NUMBER	DESCRIPTION
310185D-US	SM RAIL 185" DRK
310246D-US	SM RAIL 246" DRK
320185M-US	SM RAIL 185" MILL
320246M-US	SM RAIL 246" MILL

## ★★★★★ DOMESTIC STRUCTURAL FASTENERS - CLAMPS\*\*



### SOLARMOUNT® - END CLAMP

PART NUMBER	DESCRIPTION
302021C-US	SM ENDCLAMP B CLR AL
302021D-US	SM ENDCLAMP B DRK AL
302022C-US	SM ENDCLAMP C CLR AL
302022D-US	SM ENDCLAMP C DRK AL
302023C-US	SM ENDCLAMP D CLR AL
302023D-US	SM ENDCLAMP D DRK AL

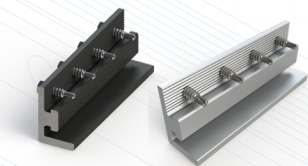
302024C-US	SM ENDCLAMP E CLR AL
302024D-US	SM ENDCLAMP E DRK AL
302025C-US	SM ENDCLAMP F CLR AL
302025D-US	SM ENDCLAMP F DRK AL
302026C-US	SM ENDCLAMP K CLR AL
302026D-US	SM ENDCLAMP K DRK AL

### SOLARMOUNT® - MID CLAMP

PART NUMBER	DESCRIPTION
302027C-US	SM BND MIDCLAMP BC SS
302027D-US	SM BND MIDCLAMP BC DRK SS
302028C-US	SM BND MIDCLAMP EF SS

302028D-US	SM BND MIDCLAMP EF DRK SS
302029C-US	SM BND MIDCLAMP DK SS
302029D-US	SM BND MIDCLAMP DK DRK SS

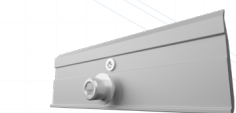
## ★★★★★ DOMESTIC STRUCTURAL FASTENERS - SPLICE\*



### SOLARMOUNT® - RAIL SPLICE

PART NUMBER	DESCRIPTION
303019D-US	BND SPLICE BAR PRO SERIES DRK
303019M-US	BND SPLICE BAR PRO SERIES MILL

## ★★★★★ DOMESTIC STRUCTURAL FASTENERS - MLPE MOUNT\*



### MLPE MOUNT

PART NUMBER	DESCRIPTION
MLPEMNT-US	Universal MLPE Mount

\*The content provided in this bulletin is for informational purposes only; it is not tax advice. Unirac cannot provide, and is not providing, tax advice regarding eligibility for tax credits, including the DCBC adder, as eligibility depends on several factors including a tax payer's risk profile. Unirac is not a tax professional. The information provided here is Unirac's good faith interpretation of these terms as of the publishing date of this bulletin, and that interpretation shall not be relied on for claiming the DCBC. Unirac's interpretation and use of "rails" and "structural fasteners" in this bulletin is informative, non-limiting guidance only and is not intended to impede a tax payer's interpretation of such terms. Unirac makes no representation or warranty that any customer or taxpayer will be able to claim a tax credit—including the DCBC—if it purchases Unirac domestic components. Not all parties can claim the domestic content bonus. Customers must consult their own tax advisors to determine eligibility.

\*\*Subject to inclusion on a TPO domestic content AVL and/or customer's independent validation through its tax advisors. Unirac makes no representation or warranty regarding eligibility".