

ADJUSTABLE TILT LEGS



VERSATILE COMPATIBILITY

- Designed for Use with NXT UMount™ and SM Standard
- UL 2703 Certified for NXT UMount™ and SM Standard
- Utilizes Unirac's Innovative Flashloc RM Attachment (Sold Separately)
- Custom Adaptability:
Adjustable from 10° - 30° Tilt



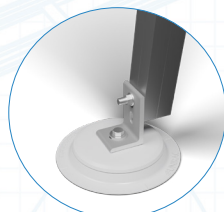
INCLUSIVE COMPONENTS

- Kitted with All Hardware Necessary for Front Foot, Rear Leg, and Rail Clamp/T-bolt Installation
- 12" or 30" Inch Adjustable Legs Available
- 2 Adjustable Tilt Legs Available



CAN BE INSTALLED ON ANY FLAT ROOF, ANYWHERE!

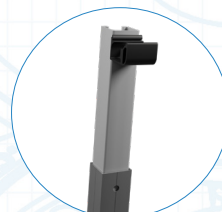
- Fully Adjustable Legs:
12" Legs – Adjustable from 8" - 12"
30" Legs – Adjustable from 18" - 30"
- No Ballast Necessary



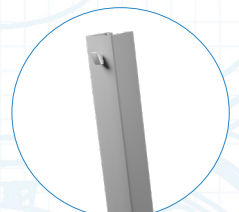
FLASHLOC RM
COMPATIBILITY



30" TILT LEG
12" TILT LEG



TILT LEG NXT UMount™
COMPATIBILITY



TILT LEG SOLARMOUNT
COMPATIBILITY

WHY TILT LEGS?

In the pursuit of harnessing solar energy efficiently, the choice of mounting systems plays a pivotal role. Unirac's tilt legs stand out as a versatile and effective solution. Unlike conventional fixed-angle mounts, adjustable tilt legs offer a range of benefits that enhance both the performance and adaptability of solar-module arrays. With only 2 legs you can cover a spectrum of tilt angles (fully adjustable from a 10° - 30° tilt scheme). Easily optimize the tilt angle for your region, power output, and solar impact. UL 2703 tested and certified for nationwide compatibility and installation. Updated U-Builder design tool for superior customization layout schema. No Ballast Necessary!